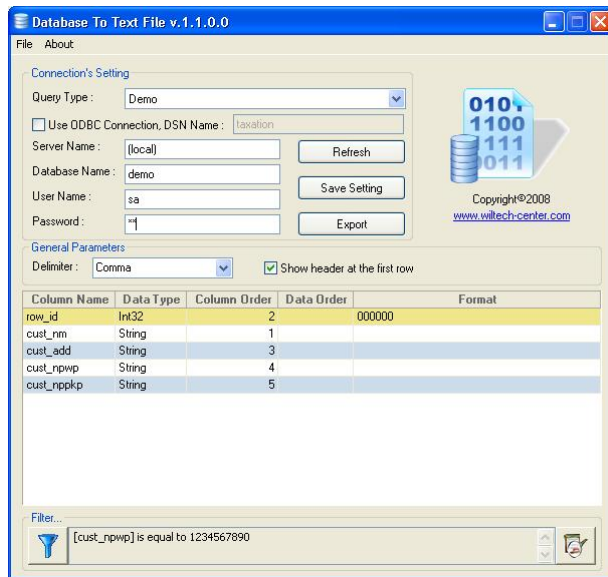


What is Database To Text File Utility ?

“Database to text file” is a small utility that encourage anyone who need to export the query results into a file. Now, it supports the SQL Server and ODBC connections. Besides export query results into text file, it support to print your query results out with Crystal Report.



Features

1. Export query's result into text file,
2. Export or import query setting from developer to end user or vice versa,
3. Easy to maintain the query,
4. Result can be ordered,
5. Flexible filter feature,
6. Support SQL Server and ODBC connection,
7. Preview Query Result,
8. Generating fields definition only (TTX) or XML Schema to support reporting in Crystal Report,
9. Print Query Result using Crystal Report,
10. Shortcuts to access menu,
11. Developed using C# .Net,
12. Long live innovation features in the future,
13. FREEWARE : Free to use, free to distribute

How To Use ?

To using this utility, you need to do an installment first. There are 2 kinds of installment :

1. Installment Utility + .Net Framework 1.1 (29MB), and
2. Installment Utility Only (5MB)

If your computer has not been installed .Net Framework, you need to use the “Installment Utility + .Net Framework 1.1”. But if it already exist, you only need install the “Installment Utility”.

This utility can be divided into 2 kind purpose :

1. Client Using
2. Developer Using

This utility can be distributed to end user who did not knew about queries. After installation process completed, the utility will perform as “client using” with a query sample displayed. If you need to modify the query, you must switch the utility into the developer state.

How to switch to developer state ?

In order to run at developer state, you need to run from “Run” window, and type this command : **dbtottext.exe wiltech-center**. Now, you can add your new query, modify the existing query or delete your query.

How to Export the Query's Setting ?

To export your query setting, you simply click the menu : **File > Export Configuration's Setting**

With this features, you can get all query setting, including the column setting and connection settings.

How to Import the Query's Setting ?

To import your query setting, you simply click the menu : **File > Import Configuration's Setting**

With this features, you can distribute the query to the end user including the columns settings. After imported the setting, you need to close the utility and re-open it again.

How to Print your Query's Result to Crystal Report?

You must already have a Crystal Report file (*.rpt) that has been design followed the query. If you want to design and need to use field definition from your query, you can generate them by click on **File>Generate Field Definition (Ctrl+D)**, you can chose the file type in order to generate to TTX or XML's File. After designed your report, from Database To Text Utility, you can print the query result by click on **File>Print As Report (Ctrl+P)**.

History :

03 April 2008 (Version : 1.0.0) : Launching at www.wiltech-center.com and submit in www.codeproject.com

08 April 2008 (Version : 1.1.0) :

14. Support ODBC connection,
15. Preview Query Result,
16. Generating fields definition only (TTX) or XML Schema to support reporting in Crystal Report,
17. Print Query Result using Crystal Report,
18. Add shortcut to access menu,
19. Bugs fixed in filter condition,

For any comment about this utility, please send your email to :

WiTech-Center

Email : support@wiltech-center.com

Website : <http://www.wiltech-center.com>